

Slide No. 43



Twin bridge under construction (* two sources of fire)

Amount of Loss	Swiss Francs 625,000 (incl. Debris Removal Swiss Francs 125,000)
Cause	Scaffolding caught fire.
Short Description	Fire must have started at around 02.00 hours in the morning. Malicious damage is thought to be the cause since there are two distinct places where the fire started. Short circuit can definitely be excluded as electrical cables were disconnected and nobody was working during the night.
Comments	Reasons for such occurrences can be either political (people protesting against specific constructions) or due to shortage of work in the building industry (a way for workers to create more work) or merely a silly prank. Such damages are practically unavoidable especially when construction work is interrupted for the night.

Slide No. 44



Heat caused expansion of armouring and spalling of concrete

Slide No. 45

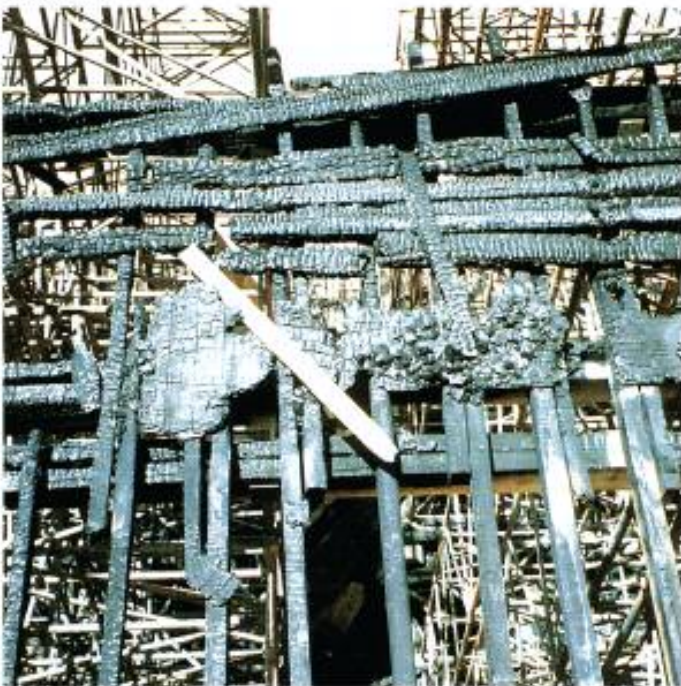


Burning falling debris caused gutting of wooden sleepers

Slide No. 46



Slide No. 47



Slide No. 46 and No. 47:

In places where concrete had not been placed, only scaffolding was affected and the least damage occurred.