

WORKING GROUPS 2021



Working Group	Sponsor	Chair	Members
WGP 122 (21) Risks associated with 3D printed structures	Andy Kane	Olivier Hautefeuille	Tatiana Martinez AxaXL, Brody Willys Munich Re, Arne Ziegert Swiss Re
WGP 123 (21) Landslides causes and risks	Richard Radevsky		Fernando DÍAZ ACERO Scor, Dr Zeljko Cabarkapa GCG, Carolina Puerta AxaXL, Fernando Orellana AxaXL, Ashrykulov Kuban CJSC Insurance Company “Kyrgyzstan”, Emecan Selkan Mapfre
WGP 124 (21) Modular Construction	Marina Zyuganova		Benjamin Rohloff HDI, Neil Fleming QBE , Nadya Trinosova Gazprombank, Ekaterina Uskova Allianz Russia, Mamoon Alyah Ceerisk, Herve Cosson Chubb, Hans Guillot Hannor Re
WGP 125 (2) Non-damage Business interruption and Delay in Start Up	Dieter Spaar		Isabelle Kowalski SCOR, Ruediger Wittekopf HDI, Gerardo Martinez HDI, Angela Flaherty Clyde & Co, Florian Candinas AxaXL, Nick Smith Marsh

IMIA working Group 122(21)

Risks associated with 3D printed structures

The use of 3D printing to create structures is largely in the experimental stage at present but the technology is developing rapidly and it is expected to be widely used in future. The working group paper will cover:

- Different types of 3D printing technology
- Current and anticipated development of the technology
- Design, workmanship and materials risks
- Underwriting Considerations – Underwriting information and guidelines
- Special clauses & exclusions
- Case Studies and claims
- Series defects and how they are handled in wordings
- Fire resistance and fire safety including fire protection systems.
- Codes of practice and legislation
- Maintenance
- Surveys and risk management



Please e-mail
sjoslin@imia.com to
join a group



IMIA working Group 123(21) Landslides causes and risks

- **Landslides are an ever-present risk in areas with ground slopes. Despite ever more sophisticated geotechnical analysis and ground monitoring techniques they still occur very regularly causing significant damage and insured loss both on construction sites and involving roads, railways pipelines and other infrastructure. The working group paper will cover:**
- Different forms of landslide and the most common causes
- Geotechnical investigation techniques, stability analysis and slope design
- Slope monitoring and early warning systems
- The impact of severe weather, groundwater regimes and drainage
- Remedial works difficulties
- Underwriting Considerations – Underwriting information and guidelines
- Policy issues, clauses & exclusions
- Case Studies and claims
- Surveys and risk management

Please e-mail
sjoslin@imia.com to
join a group

IMIA working Group 124(21) Modular Construction

- **Modular construction is being increasingly use to speed up construction and transfer construction processes from the site to a controlled environment. The working group paper will cover:**
- Common forms of modular construction and examples of projects
- Manufacturing and assembly processes
- Underwriting Considerations – Underwriting information and guidelines
- Suitability of existing construction wordings and proposed special clauses & exclusions
- Specialist plant and equipment
- Policy interface issues between off-site manufacturing and site
- Series defect considerations
- Case Studies and claims
- Potential Structural issues and durability
- Codes of practice and legislation (including testing and standards)
- Maintenance
- Surveys and risk management



Please e-mail
sjoslin@imia.com to
join a group

IMIA working Group 125(21) Non-damage Business interruption and Delay in Start Up

- **The recent Pandemic has brought into focus the risk of non-damage business interruption and delay-in-start-up affecting engineering risks. The working group paper will cover:**
- Underwriting Considerations – Underwriting information and guidelines
- Different causes of non-damage interruptions and their characteristics
- Wordings, triggers & exclusions
- Case Studies and claims
- Inter-relationship between insurance and other financial instruments including liquidated damages
- The limits of insurability.
- Pricing the risk
- Monitoring potential triggers pre-loss
- Risk management/contingency planning
- Evaluating claims



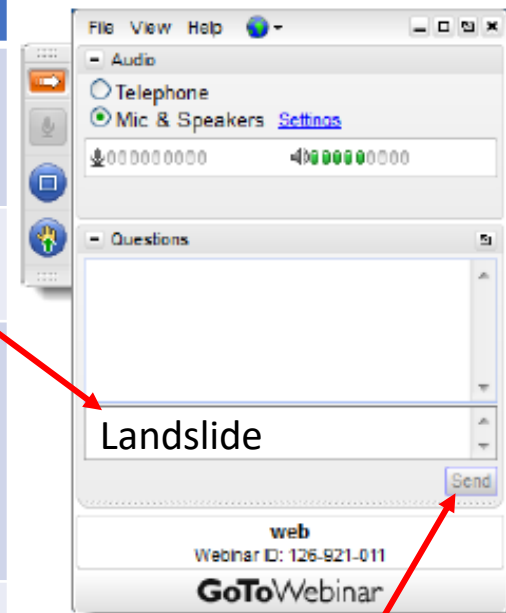
**Please e-mail
sjoslin@imia.com to
join a group**



WORKING GROUPS 2021

**How to SIGN UP
NOW**

To join a Working Group	Enter this word in the Questions section
WGP 122 (21) Risks associated with 3D printed structures	“3D”
WGP 123 (21) Landslides causes and risks	“Landslide”
WGP 124 (21) Modular Construction	“Modular”
WGP 125 (2) Non-damage Business interruption and Delay in Start Up	“BI”



Press send – we will know who you are

IMIA Paper Guidelines

Guidelines on Managing an IMIA Working Group

Contents

- [Introduction](#)
- [What does a WG consist of?](#)
- [Roles of those involved](#)
- [When does it start to work and when is it finished?](#)
- [WG Meetings](#)
- [Initial thoughts on the subject matter](#)
- [What happens if one of the WG members is not contributing?](#)
- [The form of the paper](#)
- [Polishing the paper](#)
- [Delivering the paper to the secretariat](#)
- [Press Releases](#)
- [Presentations to the conference](#)
- [Conference Equipment](#)

[Appendix 1 – Example of a plan for a WG paper](#)

[Appendix 2 – IMIA Publications Manual](#)