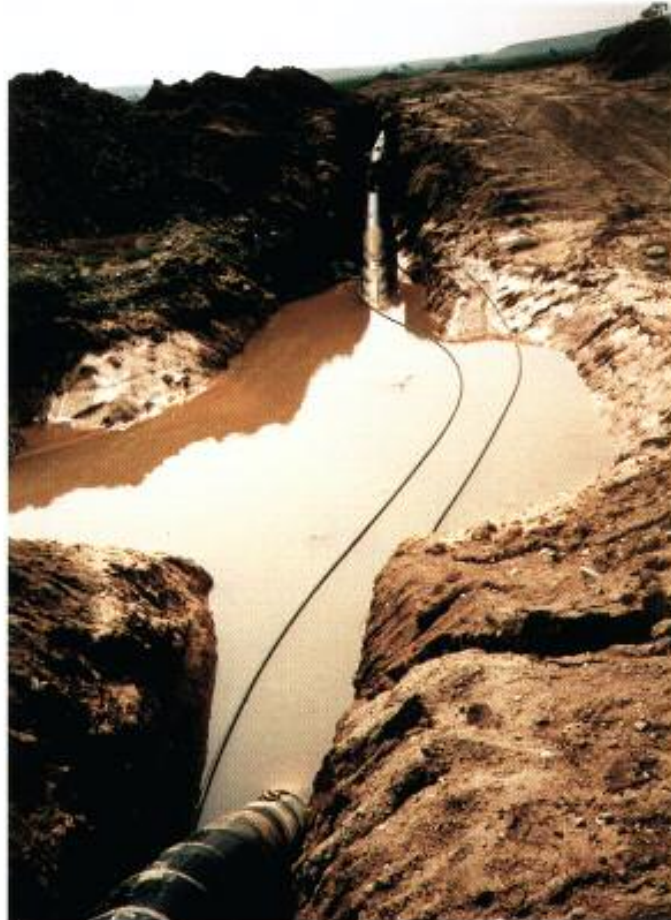


Slide No. 205
Flooded and caved in trench



Amount of loss

CHF 1,100,000

Cause

Insufficient safety measures

Short description

Heavy rainfall led to the trenches being flooded during construction of the pipelines:

- Sand bedding and padding were washed away.
- Trench walls partially collapsed and the trenches filled with water, mud and other materials.
- Pipes were lifted out of the trenches.

Comments

No limits on the maximum length of non-backfilled trenches were laid down in the policy. As a consequence, contractors left open trench sections of over 20 km in length for more than one month during the winter.

**Conclusion and
loss prevention**

The maximum length and time periods allowed for open trench sections sections must be stipulated in the policy. It is also important that a precise definition of the term "single occurrence" be given in the policy.

Slide No. 206
Flooded trench



Slide No. 207
Eroded and collapsed trench
slopes

