

CECR – Collapse of Mississippi River Bridge at Minneapolis -2007

During the evening rush hour on August 1, 2007, the bridge suddenly collapsed, killing 13 people and injuring 145. The bridge was Minnesota's third busiest, carrying 140,000 vehicles daily. The NTSB cited a design flaw as the likely cause of the collapse, noting that a too-thin gusset plate ripped along a line of rivets, and asserted that additional weight on the bridge at the time of the collapse contributed to the catastrophic failure.

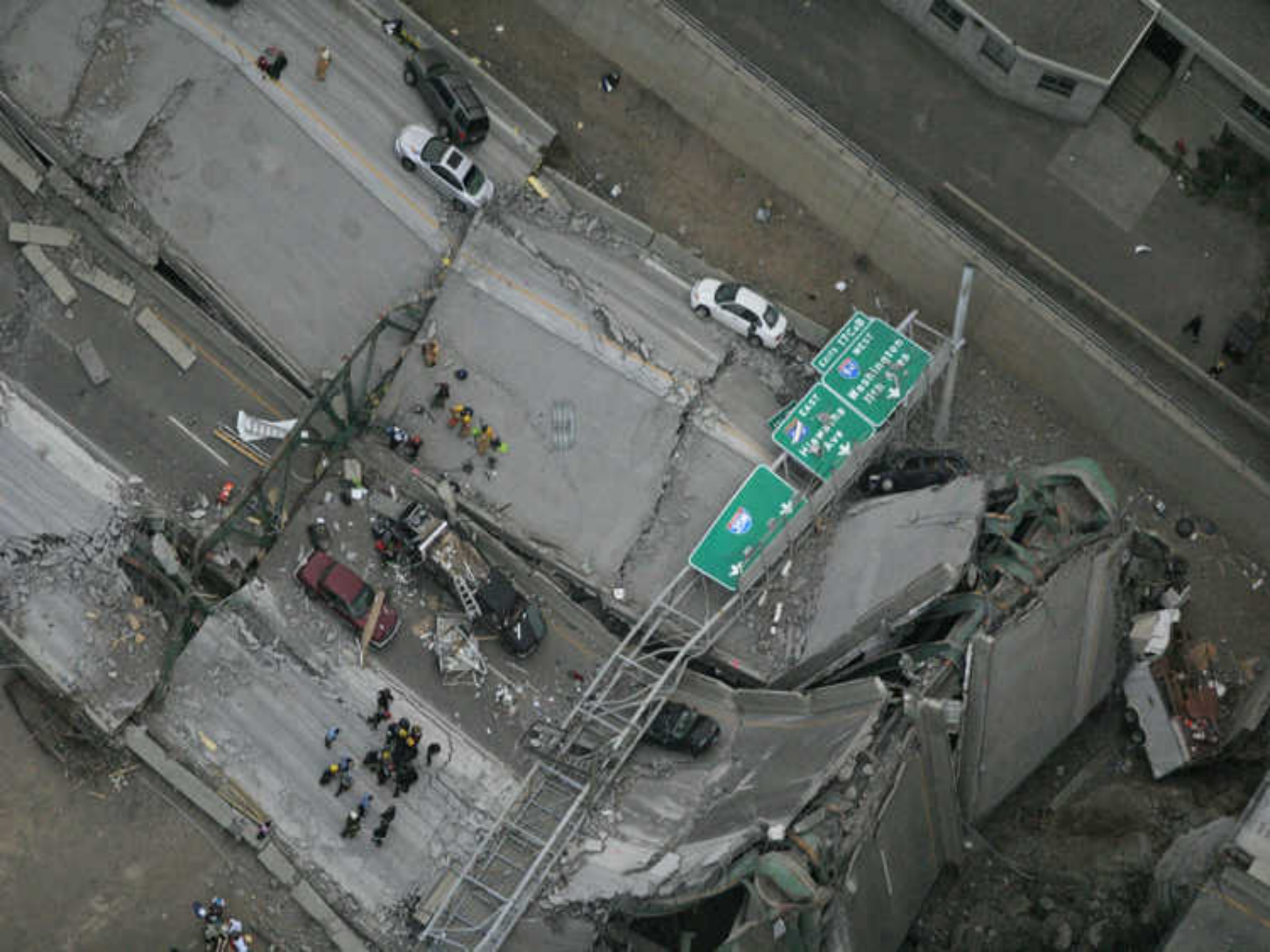














PLCX 70219

STATE OF OHIO
SHERIFF'S OFFICE
BRUNNEN
SULLIVAN

OHIO STATE POLICE







































