

Please e-mail  
[sjoslin@imia.com](mailto:sjoslin@imia.com) to  
join a group

# IMIA working Group WGP 130 (23) Development of a code for claims classification in the engineering insurance industry



Without a common claims classification system for engineering claims, statistical comparisons become problematic. The working group paper will cover:

- Current claims classification systems
- Problems in making comparisons
- Potential benefits in developing a common system
- Implementation issues
- Overcoming difficulties of historical trending and legacy classifications
- Proposals for a code

Please e-mail  
[sjoslin@imia.com](mailto:sjoslin@imia.com) to  
join a group

## IMIA working Group WGP 131 (23) Floating technology for Renewable Energy



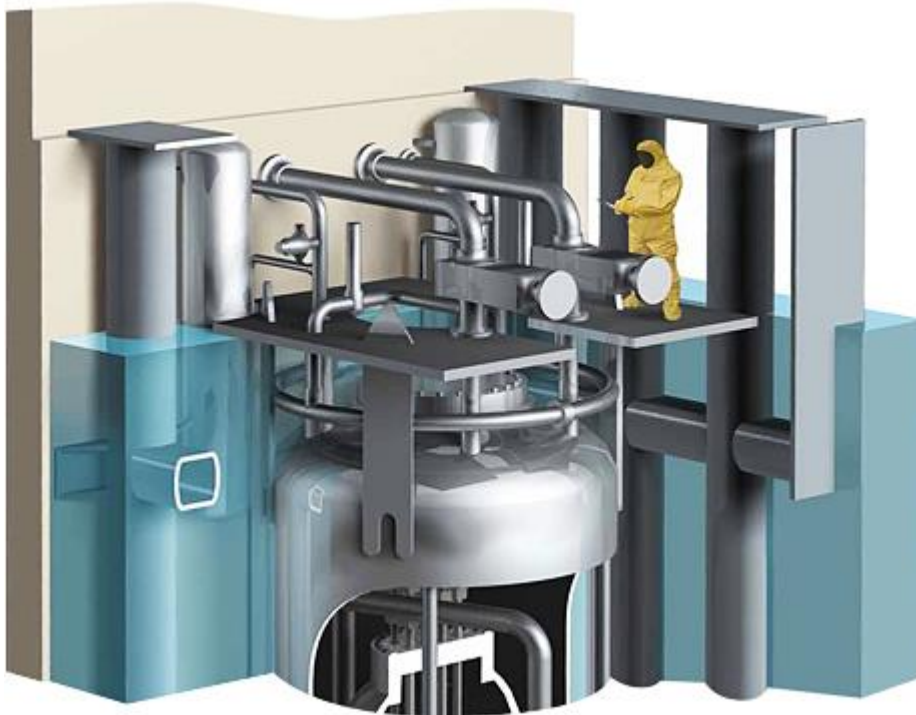
Risks with renewable energy on land or founded on the seabed are relatively well understood. There is less experience of floating installations. The working group paper will cover:

- Technologies used for floating renewable energy including recent developments
- Type, scale and location issues of upcoming installations
- Design, workmanship and materials risks
- Operational issues
- Underwriting Considerations – Underwriting information and guidelines
- Policies, special clauses & exclusions
- Interaction between the engineering, offshore and marine markets
- Case Studies and claims
- Surveys and risk management

Please e-mail  
[sjoslin@imia.com](mailto:sjoslin@imia.com) to  
join a group

## IMIA working Group WGP 132 (23) Risks associated with recent developments in nuclear power

---



There is considerable interest in small and medium sized nuclear reactors to reduce capital costs and provide power away from large grids. The working group paper will cover:

- Technologies used in small and medium reactors including recent developments
- Types of reactors that are operating, that are being designed and being developed
- Design, workmanship and materials risks
- Underwriting Considerations – Underwriting information and guidelines
- Policies, special clauses & exclusions
- Case Studies and claims
- Interaction between engineering underwriters and the nuclear pools
- Surveys and risk management

Please e-mail  
[sjoslin@imia.com](mailto:sjoslin@imia.com) to  
apply to join this  
group

# Permanent Working Group Environmental, Social and Governance (ESG)

Environmental, Social and Governance matters are taking an increasing role in Engineering lines. Clients and covered activities are changing shape, introducing new activities, new technologies, new investment policies. The working group will give added values to Underwriters on:

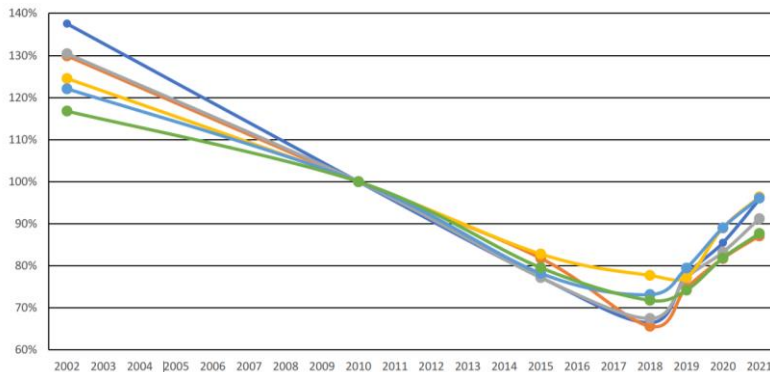
- Driving forces for our clients on ESG matters
- Changes in the investment decision making process
- Impact on designing new structures for more long term sustainability
- New technologies/new materials introduced and associated risks
- Assessment tools available
- .....and more.

Join us by expressing your interest by email to :  
[IMIA\\_PWG\\_ESG@imia.com](mailto:IMIA_PWG_ESG@imia.com)



Please e-mail  
[sjoslin@imia.com](mailto:sjoslin@imia.com) to  
apply to join this  
group

## Permanent Working Group Statistics



- Statistics by engineering insurers for engineering insurers
- Understanding complex markets
- Reference points to help engineering insurance markets benchmark their activities
  - Rate Change Index
  - Loss Ratio Index
  - Mega Loss Index
  - Type of Loss Index

# IMIA Paper Guidelines

## Guidelines on Managing an IMIA Working Group

### Contents

- [Introduction](#)
- [What does a WG consist of?](#)
- [Roles of those involved](#)
- [When does it start to work and when is it finished?](#)
- [WG Meetings](#)
- [Initial thoughts on the subject matter](#)
- [What happens if one of the WG members is not contributing?](#)
- [The form of the paper](#)
- [Polishing the paper](#)
- [Delivering the paper to the secretariat](#)
- [Press Releases](#)
- [Presentations to the conference](#)
- [Conference Equipment](#)

[Appendix 1 – Example of a plan for a WG paper](#)

[Appendix 2 – IMIA Publications Manual](#)