

Please e-mail
sjoslin@imia.com to
 join a group

IMIA working Group WGP 133 (24) Use of risk registers in major projects

Ref	Topic	Chair	Co-Chair	Members	Observers	Secretariat	Advisors	Guests	Other	Notes
1	Chair									
2	Co-Chair									
3	Members									
4	Observers									
5	Secretariat									
6	Advisors									
7	Guests									
8	Other									
9	Notes									
10	Chair									
11	Co-Chair									
12	Members									
13	Observers									
14	Secretariat									
15	Advisors									
16	Guests									
17	Other									
18	Notes									
19	Chair									
20	Co-Chair									
21	Members									
22	Observers									
23	Secretariat									
24	Advisors									
25	Guests									
26	Other									
27	Notes									
28	Chair									
29	Co-Chair									
30	Members									
31	Observers									
32	Secretariat									
33	Advisors									
34	Guests									
35	Other									
36	Notes									
37	Chair									
38	Co-Chair									
39	Members									
40	Observers									
41	Secretariat									
42	Advisors									
43	Guests									
44	Other									
45	Notes									
46	Chair									
47	Co-Chair									
48	Members									
49	Observers									
50	Secretariat									
51	Advisors									
52	Guests									
53	Other									
54	Notes									
55	Chair									
56	Co-Chair									
57	Members									
58	Observers									
59	Secretariat									
60	Advisors									
61	Guests									
62	Other									
63	Notes									
64	Chair									
65	Co-Chair									
66	Members									
67	Observers									
68	Secretariat									
69	Advisors									
70	Guests									
71	Other									
72	Notes									
73	Chair									
74	Co-Chair									
75	Members									
76	Observers									
77	Secretariat									
78	Advisors									
79	Guests									
80	Other									
81	Notes									
82	Chair									
83	Co-Chair									
84	Members									
85	Observers									
86	Secretariat									
87	Advisors									
88	Guests									
89	Other									
90	Notes									
91	Chair									
92	Co-Chair									
93	Members									
94	Observers									
95	Secretariat									
96	Advisors									
97	Guests									
98	Other									
99	Notes									
100	Chair									

Many major projects use risk registers as a risk management tool . The working group paper will cover:

- The purpose and key elements of a risk register
- Which risks should be included and which not
- Severity and frequency criteria
- Specialist software vs spreadsheets
- Managing the risk of information overload and making the risk register practical and useful
- Risk registers for different users at different levels within a project (single register or multiple registers?)
- Use of risk registers for checks on contingency planning

Please e-mail
sjoslin@imia.com to
join a group

IMIA working Group WGP 134 (24) Construction and operation of semi-conductor plants



Globalfoundries Fab 1 in Dresden, Germany.
https://en.wikipedia.org/wiki/Semiconductor_fabrication_plant

To overcome concerns about semiconductor supply chain vulnerability and to meet increasing demand the number of semiconductor plants is set to grow significantly. The working group paper will cover:

- The particular complexities and precision needed for semiconductor production
- Unusual risk characteristics of semiconductor plants and construction challenges
- Design, workmanship and materials risks
- Operational issues and need for specialised protections
- Underwriting Considerations – Underwriting information and guidelines
- Policies, special clauses & exclusions
- Case Studies and claims
- Surveys and risk management

Please e-mail
sjoslin@imia.com to
join a group

IMIA working Group WGP 135 (24) Construction and operation of Electric vehicle battery manufacturing plants

As the demand for electric vehicles increases there is an increasing need for battery manufacturing plants. The working group paper will cover:

- The manufacturing processes for different EV batteries
- Unusual risk characteristics of battery plants and construction challenges
- Design, workmanship and materials risks
- Operational issues and need for specialised protections
- Underwriting Considerations – Underwriting information and guidelines
- Policies, special clauses & exclusions
- Case Studies and claims
- Surveys and risk management



https://en.wikipedia.org/wiki/Gigafactory_Nevada

IMIA Paper Guidelines

Guidelines on Managing an IMIA Working Group

Contents

- [Introduction](#)
- [What does a WG consist of?](#)
- [Roles of those involved](#)
- [When does it start to work and when is it finished?](#)
- [WG Meetings](#)
- [Initial thoughts on the subject matter](#)
- [What happens if one of the WG members is not contributing?](#)
- [The form of the paper](#)
- [Polishing the paper](#)
- [Delivering the paper to the secretariat](#)
- [Press Releases](#)
- [Presentations to the conference](#)
- [Conference Equipment](#)

[Appendix 1 – Example of a plan for a WG paper](#)

[Appendix 2 – IMIA Publications Manual](#)

Please e-mail
sjoslin@imia.com to
apply to join this
group

Permanent Sub-committee Environmental, Social and Governance (ESG)

Environmental, Social and Governance matters are taking an increasing role in Engineering lines. Clients and covered activities are changing shape, introducing new activities, new technologies, new investment policies. The working group will give added values to Underwriters on:

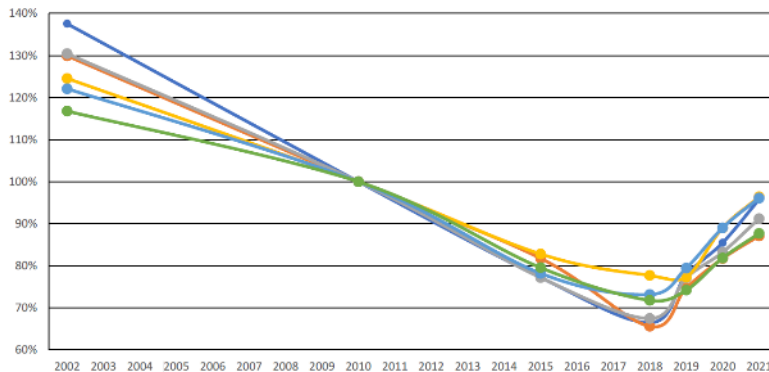
- Driving forces for our clients on ESG matters
- Changes in the investment decision making process
- Impact on designing new structures for more long term sustainability
- New technologies/new materials introduced and associated risks
- Assessment tools available
-and more.



Join us by expressing your interest by email to :
IMIA_PWG_ESG@imia.com

Please e-mail
sjoslin@imia.com to
apply to join this
group

Permanent Sub-committee Statistics



- Statistics by engineering insurers for engineering insurers
- Understanding complex markets
- Reference points to help engineering insurance markets benchmark their activities
 - Rate Change Index
 - Loss Ratio Index
 - Mega Loss Index
 - Type of Loss Index